



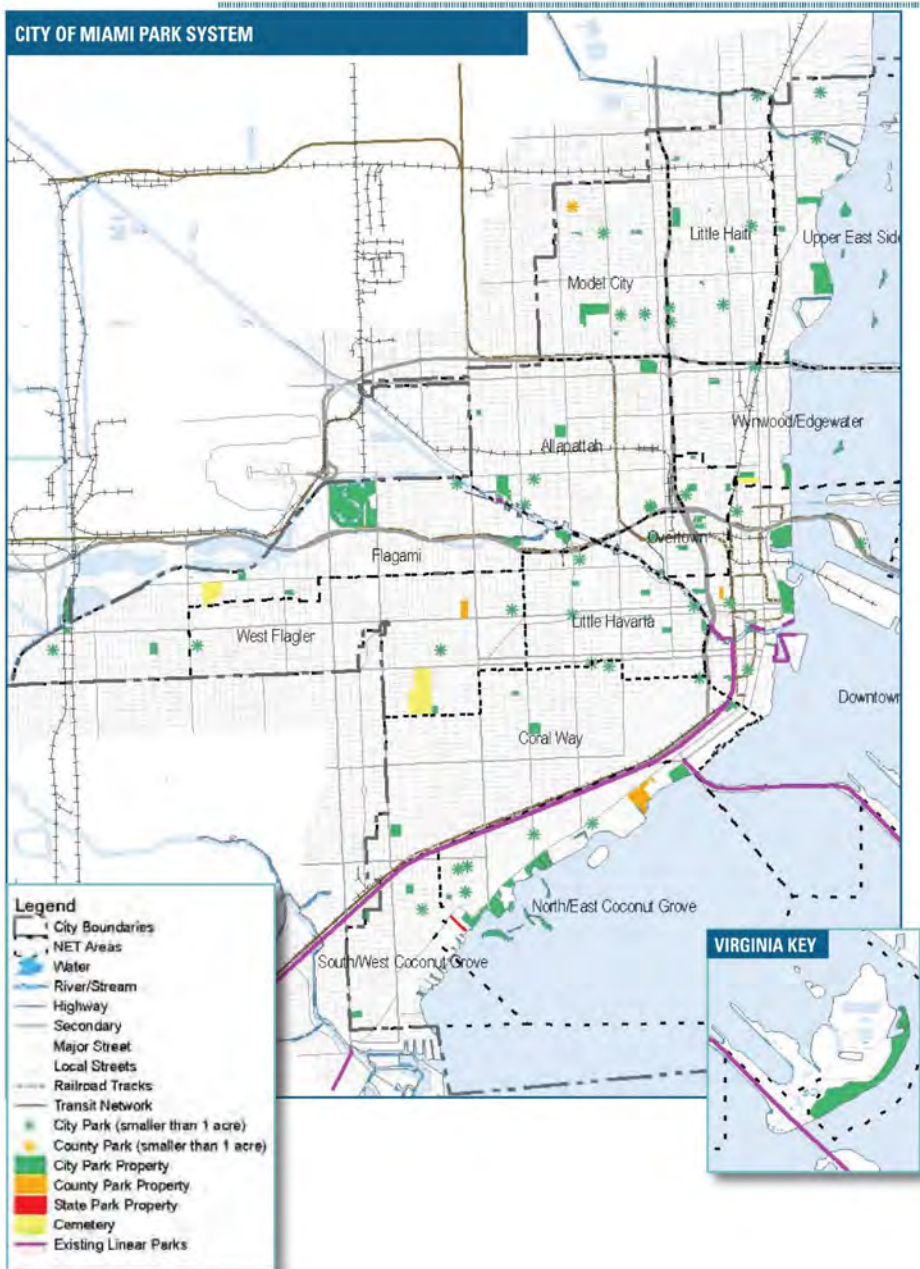
Parks and Recreation System Master Plan

Miami River Commission Sub-Committee
June 16, 2023

What We Are Up To Today

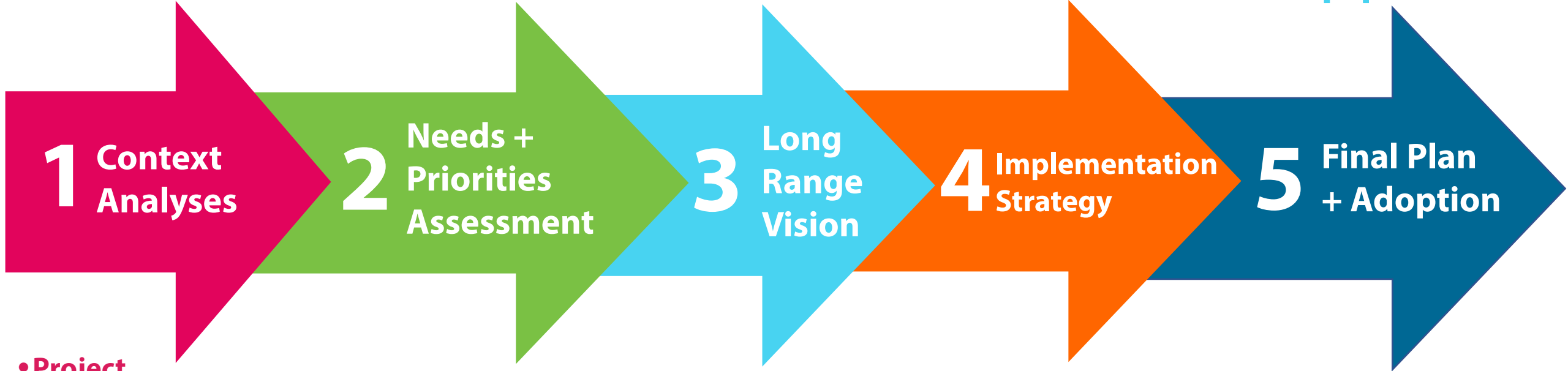
- Purpose
- Approach
- Overview of Proposed Draft Vision
- Overview of Proposed Draft Implementation Strategy
- Next Steps

Purpose



- Assess existing conditions of parks and recreation system, programs, services, staffing, and funding.
- Identify parks and recreation trends, needs, and priorities.
- Provide strategic and resilient recommendations for the improvement and provision of facilities, programs, services, park land acquisition, and development.
- Meet requirements for the Commission of Accreditation of Parks and Recreation Agencies (CAPRA)

Our Approach



- **Project Coordination**
- **Planning Context**
- **Demographic Context**
- **Park System Context**
- **Context Summary Document**

- **Qualitative Analysis**
- **Quantitative Analysis**
- **Anecdotal Analysis**
- **Needs + Priorities Summary Document**

- **Long-Range Vision Workshop**
- **Capital + O&M Costs**
- **Parks and Recreation Vision Summary Document**

- **Funding Alternatives**
- **Prioritization**
- **Implementation Strategy Summary Document**

- **Draft Final Master Plan**
- **Final Master Plan**

Public Engagement Highlights



1,600+
Statistically Valid / Online Survey Responses

12 In-Person/
Virtual Public Meetings



30,000+
Question Responses

6,000+
Opinion Dots



Miami River Commission (MRC) Coordination

- Met with MRC Sub-Committee May 27, 2022
- Met with the Committee on July 11th
- Met with Managing Director to incorporate MRC Park Opportunities into the Plan
- Continued coordination with MRC Managing Director
- Met with MRC Sub-Committee June 16, 2023





Guiding Principles



RENEW

existing facilities, programs, and services.



CONNECT

the parks system, seamlessly into the community.



GROW

the parks system to catch-up with the city's growth



INNOVATE

to maximize equitable impact in the community.



Draft Guiding Principles

RENEW

existing facilities, programs, and services.

Physical System

- 1. Upgrade parks, recreation facilities, and amenities.**
- 2. Expedite implementation of capital improvements.**
- 3. Conduct ongoing maintenance to provide quality experiences.**
- 4. Proactively plan for improvements.**
- 5. Integrate public art into park improvements.**



Draft Guiding Principles

CONNECT

the parks system, seamlessly into the community.

Physical System

- 1. Develop high-quality pedestrian and bicycle connections to parks, natural areas, and waterbodies.**
- 2. Provide access to micro-mobility devices at or near parks and natural areas.**
- 3. Provide multi-modal transit access to parks, programs, and services.**
- 4. Maximize public parking opportunities around and near parks.**
- 5. Enhance awareness of parks and recreation facilities.**



Draft Guiding Principles

GROW

the parks system (collaboratively, creatively, and aggressively) to catch-up with the city's growth.

Physical System

1. Expand Park land
2. Increase access to Nature
3. Increase access to Water
4. Increase Parks and Recreation facilities and amenities
5. Provide access to Indoor Recreation Center space
6. Increase Public Art in Parks

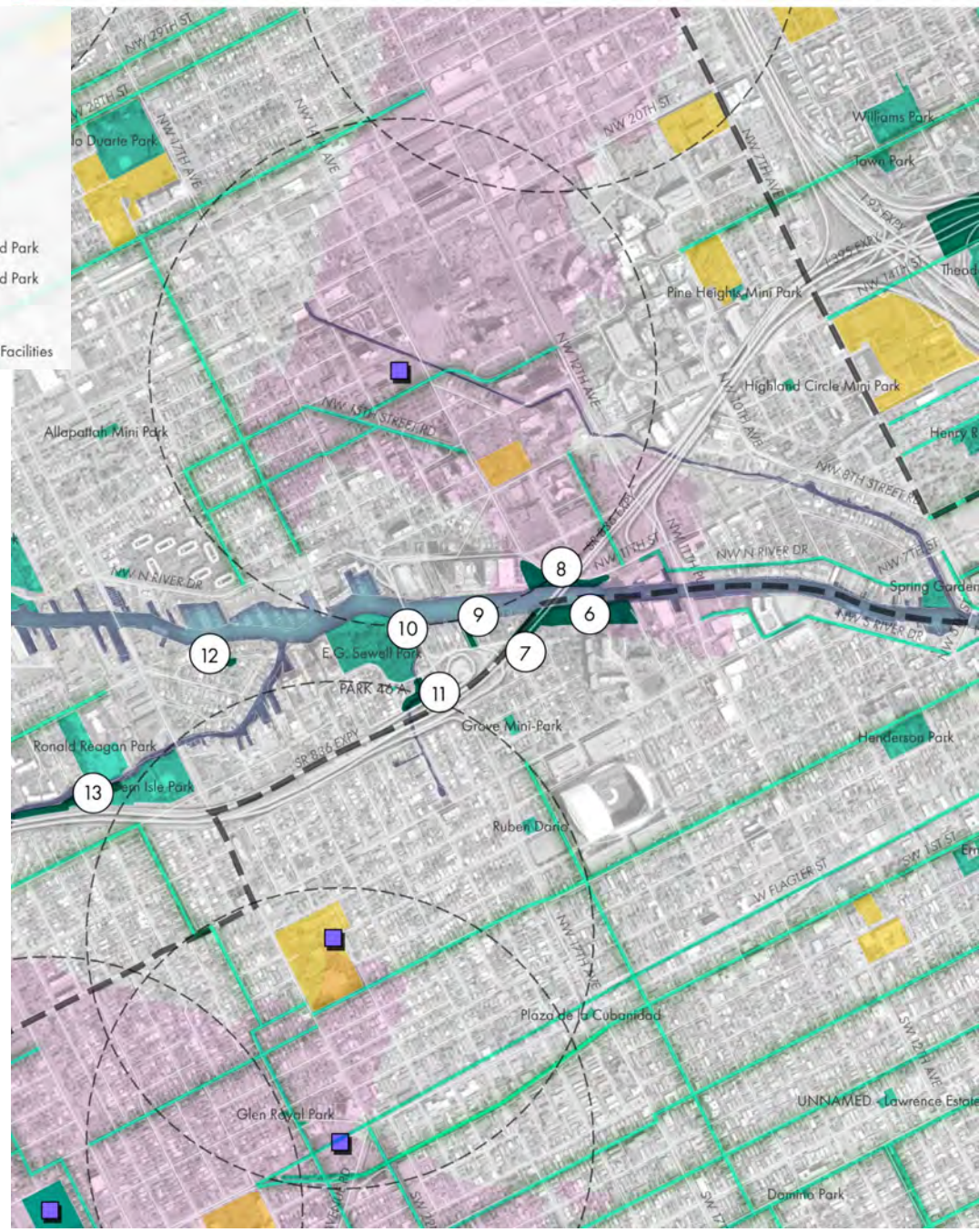


DRAFT Miami River Vision – Lower River

1. Fort Dallas Park
2. 1st St Bridge west bank
3. 101 NW South River Dr
4. 169 NW S River Dr
5. 642 NW 3 St



- Commission Districts
- School (K-12)
- Park Desert Area
- Water Bodies
- Existing Park
- Proposed Park
- Proposed Neighborhood Park
- Proposed Neighborhood Park Half Mile Buffer
- Major Road
- Existing/Proposed Bike Facilities



DRAFT Miami River Vision – Middle River

6. 800 NW 13 Ave (River Parc redevelopment of Robert King High towers)
7. 1481 NW S River Dr
8. 1280 NW 11th St
9. NW 16 AV Median north of NW South River DR (Grove Mini Circle Park)
10. NW 17th St Bridge over Miami River
11. 1750 NW South River Dr
12. 2014 NW 13 ST (Durham Park)
13. Fern Isle Park improvements



DRAFT Miami River Vision – Upper River

- 14. NW 27th Ave at Dolphin Expressway
(Expansion of Fern Isle Park)
- 15. NW S River Drive at NW 27th Ave
- 16. NW S River Drive at NW 26th Ave



GROW

Park Land



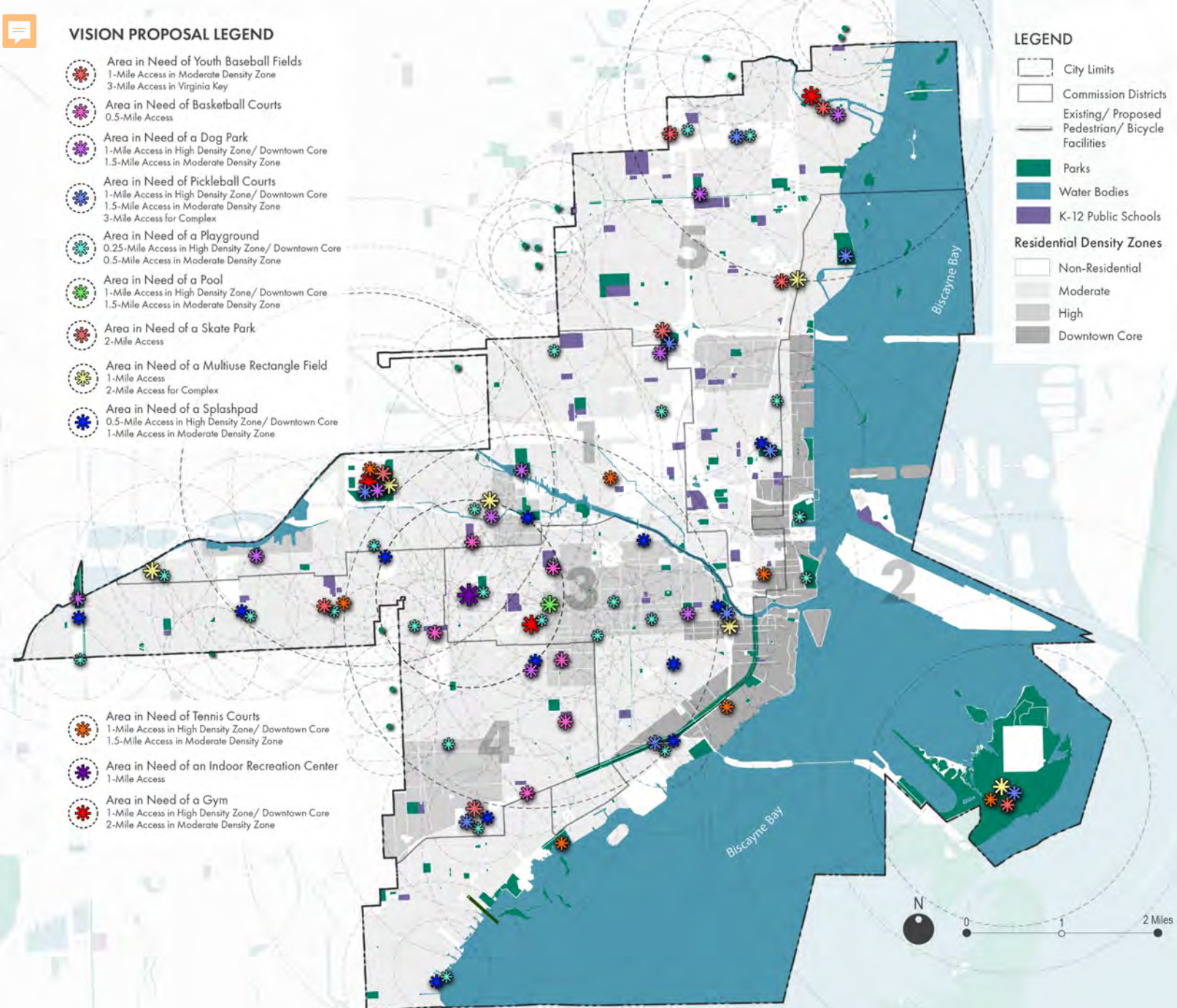
VISION PROPOSAL LEGEND

- Area in Need of Youth Baseball Fields
1-Mile Access in Moderate Density Zone
3-Mile Access in Virginia Key
- Area in Need of Basketball Courts
0.5-Mile Access
- Area in Need of a Dog Park
1-Mile Access in High Density Zone/ Downtown Core
1.5-Mile Access in Moderate Density Zone
- Area in Need of Pickleball Courts
1-Mile Access in High Density Zone/ Downtown Core
1.5-Mile Access in Moderate Density Zone
3-Mile Access for Complex
- Area in Need of a Playground
0.25-Mile Access in High Density Zone/ Downtown Core
0.5-Mile Access in Moderate Density Zone
- Area in Need of a Pool
1-Mile Access in High Density Zone/ Downtown Core
1.5-Mile Access in Moderate Density Zone
- Area in Need of a Skate Park
2-Mile Access
- Area in Need of a Multiuse Rectangle Field
1-Mile Access
2-Mile Access for Complex
- Area in Need of a Splashpad
0.5-Mile Access in High Density Zone/ Downtown Core
1-Mile Access in Moderate Density Zone

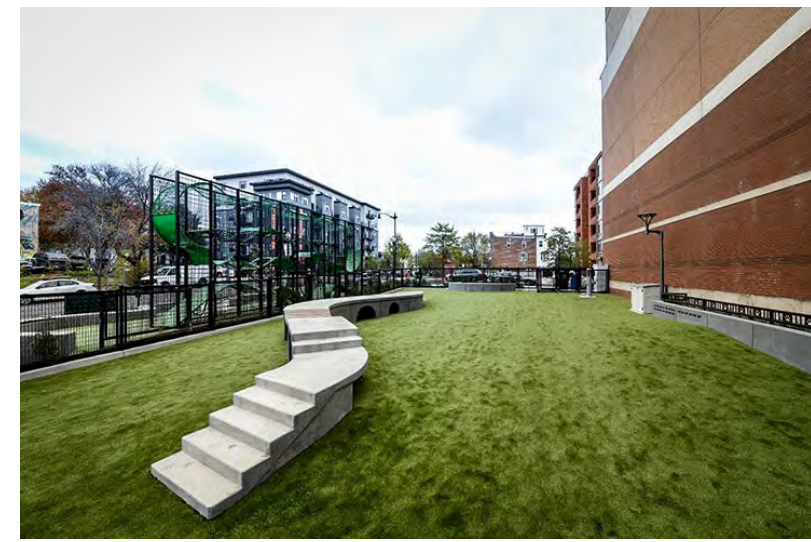
- Area in Need of Tennis Courts
1-Mile Access in High Density Zone/ Downtown Core
1.5-Mile Access in Moderate Density Zone
- Area in Need of an Indoor Recreation Center
1-Mile Access
- Area in Need of a Gym
1-Mile Access in High Density Zone/ Downtown Core
2-Mile Access in Moderate Density Zone

LEGEND

- City Limits
 - Commission Districts
 - Existing/ Proposed Pedestrian/ Bicycle Facilities
 - Parks
 - Water Bodies
 - K-12 Public Schools
- Residential Density Zones**
- Non-Residential
 - Moderate
 - High
 - Downtown Core



Parks and Recreation Facilities





Source: www.nrpa.org



Source: www.turftank.com



Draft Guiding Principles

INNOVATE

to maximize equitable impact in the community.

- 1. Integrate technological innovation into the parks system and service delivery**
- 2. Position parks to help address complex challenges in the community**
 - Community Safety
 - Resiliency
 - Access to Healthy Foods
 - Access to Healthcare
 - Affordable Housing
 - Community Blight
 - Access to Transportation
 - High-quality Jobs



INNOVATE

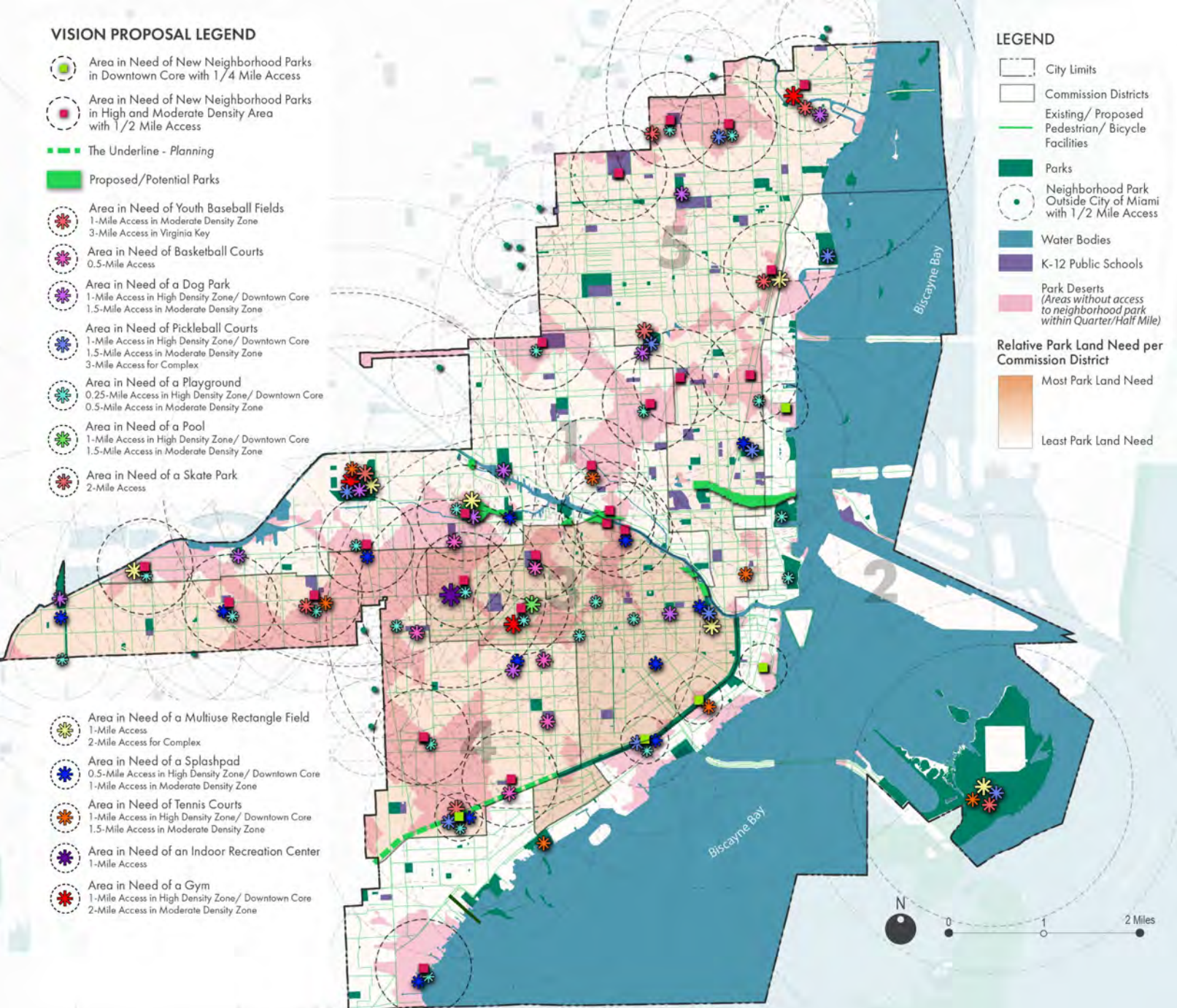
Resiliency

VISION PROPOSAL LEGEND

-  Area in Need of New Neighborhood Parks in Downtown Core with 1/4 Mile Access
-  Area in Need of New Neighborhood Parks in High and Moderate Density Area with 1/2 Mile Access
-  The Underline - Planning
-  Proposed/Potential Parks
-  Area in Need of Youth Baseball Fields
1-Mile Access in Moderate Density Zone
3-Mile Access in Virginia Key
-  Area in Need of Basketball Courts
0.5-Mile Access
-  Area in Need of a Dog Park
1-Mile Access in High Density Zone/ Downtown Core
1.5-Mile Access in Moderate Density Zone
-  Area in Need of Pickleball Courts
1-Mile Access in High Density Zone/ Downtown Core
1.5-Mile Access in Moderate Density Zone
3-Mile Access for Complex
-  Area in Need of a Playground
0.25-Mile Access in High Density Zone/ Downtown Core
0.5-Mile Access in Moderate Density Zone
-  Area in Need of a Pool
1-Mile Access in High Density Zone/ Downtown Core
1.5-Mile Access in Moderate Density Zone
-  Area in Need of a Skate Park
2-Mile Access
-  Area in Need of a Multiuse Rectangle Field
1-Mile Access
2-Mile Access for Complex
-  Area in Need of a Splashpad
0.5-Mile Access in High Density Zone/ Downtown Core
1-Mile Access in Moderate Density Zone
-  Area in Need of Tennis Courts
1-Mile Access in High Density Zone/ Downtown Core
1.5-Mile Access in Moderate Density Zone
-  Area in Need of an Indoor Recreation Center
1-Mile Access
-  Area in Need of a Gym
1-Mile Access in High Density Zone/ Downtown Core
2-Mile Access in Moderate Density Zone

LEGEND

-  City Limits
-  Commission Districts
-  Existing/ Proposed Pedestrian/ Bicycle Facilities
-  Parks
-  Neighborhood Park Outside City of Miami with 1/2 Mile Access
-  Water Bodies
-  K-12 Public Schools
-  Park Deserts (Areas without access to neighborhood park within Quarter/Half Mile)
-  Relative Park Land Need per Commission District
Most Park Land Need
Least Park Land Need



An Integrated Draft Vision



RENEW



CONNECT



GROW

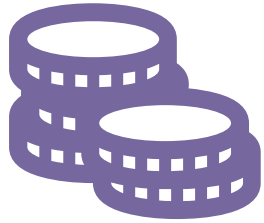


INNOVATE

What We Are Up To Today

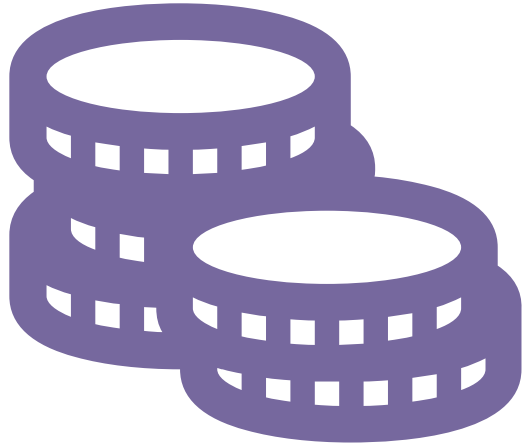
- Purpose + Approach
- Overview of Existing Conditions + Needs Assessment Findings
- Overview of Draft Vision
- Overview of Draft Implementation Strategy
- Next Steps

Draft Implementation Strategy



- **Funding**
- **Prioritization Strategy**
- **Staff Actions**

Funding



- Miami Forever Bond
- Partnership
- Grants
- Dedicated Funding Sources

Draft Prioritization Strategy



1. Funding Allocation Targets – City-wide spending targets established through the public input process.

2. Prioritization Criteria – Criteria used to score and prioritize improvements.

Draft Staff Actions



Goal 1: RENEW existing facilities, programs, and services.



Goal 2: CONNECT the parks system, seamlessly into the community.



Goal 3: GROW the park system to catch-up with city's growth.



Goal 4: INNOVATE to maximize equitable impact in the community.

- **72 Policies + Actions**
+ 150 Steps with KPIs

What We Are Up To Today

- Purpose
- Approach
- Overview of Draft Vision
- Overview of Draft Implementation Strategy
- **Next Steps**

Project Contact Information

Denisse Medina (DeMedina@miamigov.com)

City of Miami Parks and Recreation Department Project Manager

Cristobal Betancourt, PLA, AICP (Cbetancourt@chenmoore.com)

Chen Moore & Associates – Project Manager

Carlos Perez, PLA (CPerez@perezpd.com)

Perez Planning + Design – Project Lead

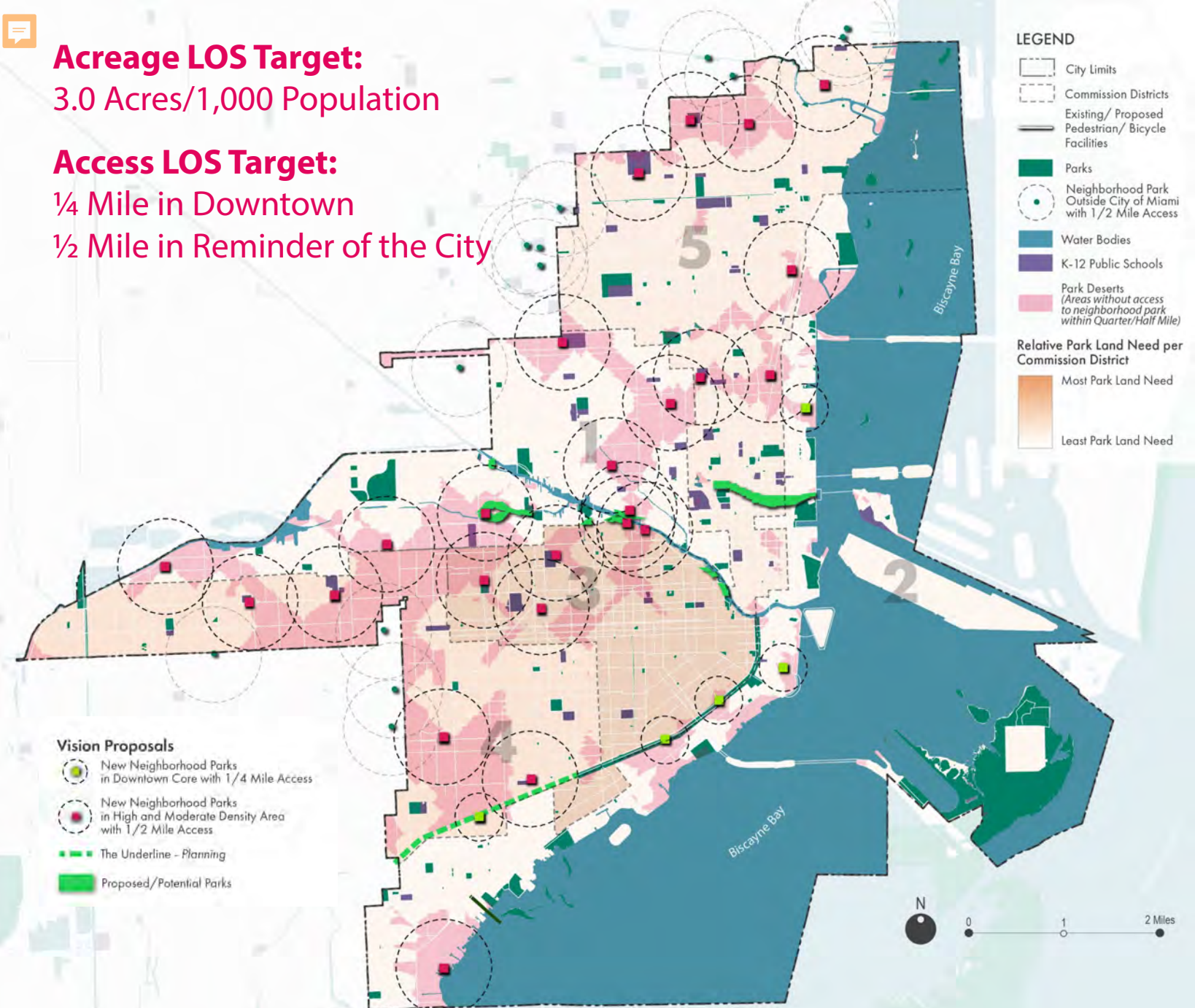


REIMAGINE PARKS

MIAMI

Acres LOS Target:
3.0 Acres/1,000 Population

Access LOS Target:
1/4 Mile in Downtown
1/2 Mile in Remainder of the City



Park Land

0.25 Acre Mini Park



0.5 Acre Mini Park





Draft Guiding Principles

GROW

the parks system (collaboratively, creatively, and aggressively) to catch-up with the city's growth.

Physical System

1. **Expand Park land**
2. **Increase access to Nature**
3. **Increase access to Water**
4. **Increase Parks and Recreation facilities and amenities**
5. **Provide access to Indoor Recreation Center space**
6. **Increase Public Art in Parks**

1. DRAFT Funding Allocation Targets



Project Types	Funding Amount
Development of New Parks and Recreation Facilities	39%
Improvement to Existing Facilities	36%
Development of Walking and Biking Trails	14%
Acquiring Park Land	11%
Total Funding	100%

2. DRAFT Prioritization Criteria

- Development of New Parks and Recreation Facilities
- Improvements to Existing Facilities
- Development of Walking and Biking Trails
- Acquiring Park Land



Goal	Criteria
RENEW	Park Utilization
	Priority Need
	Facility Condition/Need
CONNECT	Mobility
	Natural/ Cultural Resource Access
	Social Connectivity
	Staffing and Financial Resources Park, School, and Trail Connectivity
GROW	Park Desert
	LOS Gap
	Acreage LOS Need
	Staffing and Financial Resources
INNOVATE	Partnerships
	Social Vulnerability
	Resiliency